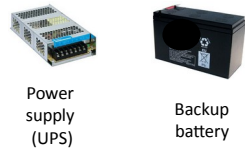
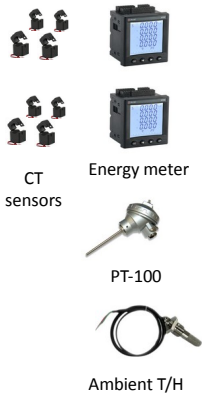


Distributed Transformer Monitoring System (DTMS) demo (Tirathai)

- Data collection interfaces:
- MODBUS RS485
 - 4-20mA
 - PT-100
 - Digital IO
 - I2C
 - ADC



DTMS gateway



Distributed transformer

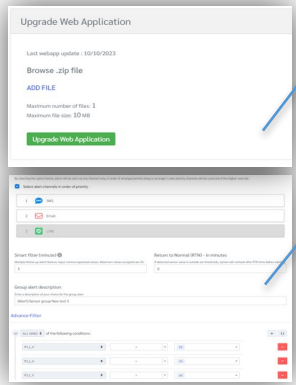


Control cabinet

MQTT

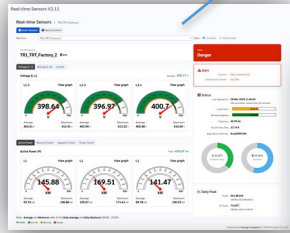


Server



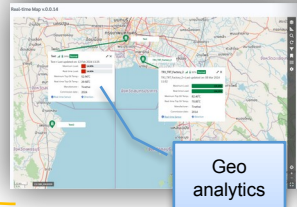
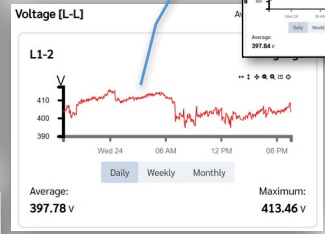
Secure online firmware upgradable via HTTPS/VPN

Secure online/on-site configurable via HTTPS/VPN & Complex – flexible alert setup

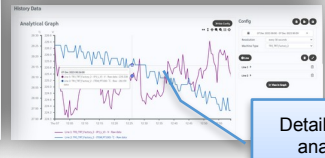


Real-time dashboard

No-missing data



Geo analytics



Detailed data analytics